

North Shore Eco-Sourced Nursery Contacts



Why eco-source?

Plants sourced locally are better adapted to local conditions, are more likely to survive, and will help to preserve the distinctiveness of the plants from this region. There are often genetic differences within the same plant species simply due to where they are located. Whether this is subtle or obvious (e.g. leaf size variations), eco-sourcing helps to preserve these differences.

Eco-sourcing:

- Is a tool for managing/protecting biodiversity (the variety of unique flora, fauna and habitats found naturally in an area)
- Aligns management processes with processes of natural selection
- Is population based
- Connects 'source to destination'

In NZ, we have a relatively small number of different species but their importance on a global scale is disproportionate, as many of our species have no close relatives elsewhere in the world, or are regarded as ancestral to more common groups.

"It is important to understand that indigenous biodiversity is a global concept. The adding of plants to a landscape, whether they are exotic or native species, may initially increase species richness (of that site), but does not necessarily prevent the decline of overall global biodiversity. In fact, these new plants may crowd out established (or establishing) indigenous species and further reduce overall global biodiversity." (Weaving Resilience Into Our Working Lands: recommendations for the future roles of native plants; Office of the Parliamentary Commissioner for the Environment, 2001)

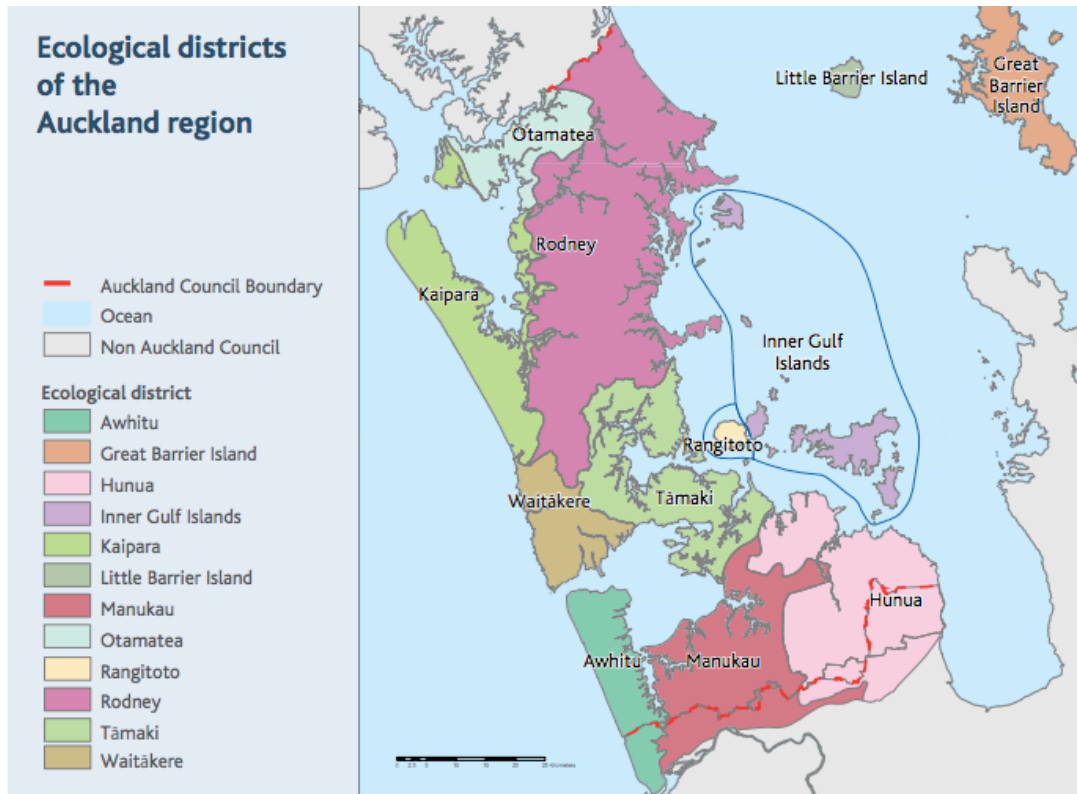
New Zealand has been classed a world biodiversity 'hotspot' and by eco-sourcing plants, you can help!

Ecosourcing Code of Practice and Ethics:

<http://www.waitakere.govt.nz/abtcit/ne/pdf/ecosourcing-codeofpractice.pdf>



Refer to this map to find your ecological district for purchasing plants.



Nurseries that sell ecosourced native plants to the North-West

When buying a plant, check it is ecosourced to your ecological district as per the map.

Name	Location	Contact	Notes
Kaipatiki Project	17 Lauderdale Rd, Birkdale	09 482 1172	Not a retail nursery unless you are buying in bulk (50 plants or more)
The Native Plant Centre	35 Sunnyside Rd, Coatesville Albany	Brenda and Andrew (09) 415 7419 info@nznativeplants.co.nz www.nznativeplants.co.nz/	
Jeff McCauley	Piha	022 6899-021	
Oratia native Plant Nursery	625 West Coast Road Oratia	Phone: (09) 818-6467 Fax: (09) 818-6457 email: info@oratianatives.co.nz oratianatives.co.nz	Opening Hours: 8-4.30pm Mon-Fri, 9-4.30pm Sat, Closed public holidays
Signature Plants "The Plant People"	703 West Coast Road, Oratia	Oratia Nursery Michelle Hall Ph 09 814-9135 021 780 472 E oratia@signatureplants.co.nz	Stock Waitakere & Tamaki ecological district
Signature Plants "The Plant People"	Dairy Flat	Dairy Flat Nursery: 09 421 0211 dairyflat@signatureplants.co.nz www.theplantpeople.co.nz	Stock Rodney, Tamaki & Kaipara ecological district
Taupo Native Plant Nursery	South Auckland Nursery, 341 Glenbrook-Waiuku Road, Mission Bush	Philip Smith 0274 981-583 Dave Dalton, Operations Manager Ph; 07 3785450 Fax; 0800828 764 info@tauponativeplant.co.nz or southauckland@tauponativeplant.co.nz www.tauponativeplant.co.nz/	
Naturally Native	30 Gammon Mill Rd Oropi Tauranga	+64 (7) 543-1494 info@naturallynative.co.nz	Can send native plants up to Auckland
Coastlands Nursery	65 Keepa Road, RD1 Whakatane	07 307-0269 coastlandspn@xtra.co.nz	Specialise in dune and native

		www.coastlandsnursery.co.nz	plants. Can send plants up to Auckland
Scrub	437 Monowai Road Silverdale	Rodney & Jane Straka rodney@scrub.co.nz jane@scrub.co.nz 027 375 0600 09 420 4082 info@scrub.co.nz	Also offer environmental consultancy.
Liberty Park Natives	90 Jones Rd Omaha	admin@libertypark.co.nz Rhonda Whitehead – manager John Lawrence – owner 09 422-7307 www.libertypark.co.nz	Eco-source to Rodney eco-boundaries. Double check if your area is included in this.
Takana native trees	102 Omaha Flats Road Matakana	Don Turner 0800 TAKANA don@takana.co.nz	Sell large specimens. May or may not be eco-sourced to your area so you will need to ask.